



2018

Honda Navigation System

Instruction Guide / Pink USB Update

MAP UPDATE INSTRUCTIONS

IMPORTANT: Read these instructions in their entirety before you begin updating the navigation system.

- Park your vehicle outside in a safe, well-ventilated place. Do not start or continue the update while driving.
- Engine must be running to prevent the battery from discharging during the update.
Note: *Loss of power during the update can cause navigation system damage.*
- Do not drive your vehicle at any time during the update. The update will take 15-20 minutes to complete.
- The navigation function is not useable during the map update.
- The navigation system can't go back to the previous version after the map update.

Preparation

- Before starting the update, make sure you have the password that came with the map update.
- Locate the USB interface required for the Navigation Map Update.
 - **Civic, Fit, and HR-V vehicles:** The USB interface is located in the lower portion of the center stack area under the Audio System.
 - **CR-V vehicles:** The USB interface is located inside the Center Console (Armrest).
 - **CR-Z vehicles:** The USB interface is located inside the Glove Box.

Civic, Fit, and HR-V



CR-V



CR-Z



NOTES:

1. If there is more than one USB port in these locations, use Port #2
2. CR-Z owners: USB port may be hard to find in glove box. If you can't see it, run your hand along the top of the glove box

**For detailed map coverage information please contact the Honda Navigation Center:
United States: 1-888-291-4675 or www.hondanavi.com**

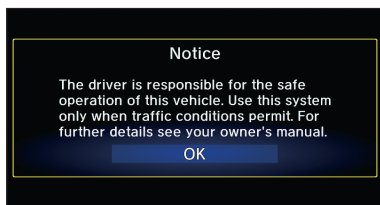
Installation

#1

- Start the engine and let the navigation system boot up.

#2

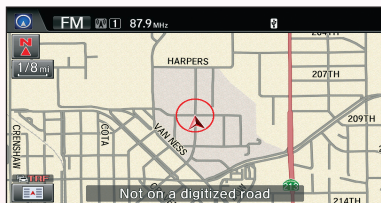
- The following Confirmation screen appears. Select **OK**.



#3

- Be sure you are on a map screen, then insert the USB device into the USB port.

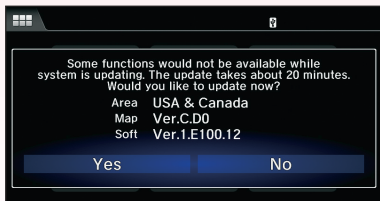
Note: *Once you connect the USB device, don't remove it or turn off the engine.*



For detailed map coverage information please contact the Honda Navigation Center:
Canada: 1-866-353-9655 or www.hondanavi.ca

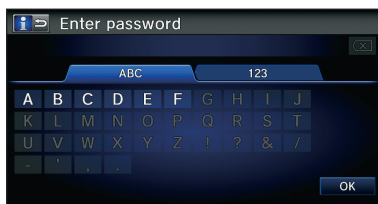
#4

- When the following screen appears, select **Yes** on the touch screen.



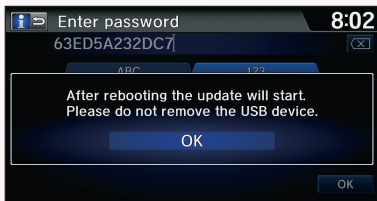
#5

- When the following screen appears, enter your password (12 digits).
Select **OK** on the touch screen when finished.



#6

- When the Notification screen appears, select **OK** on the touch screen.



For detailed map coverage information please contact the Honda Navigation Center:
United States: 1-888-291-4675 or www.hondanavi.com

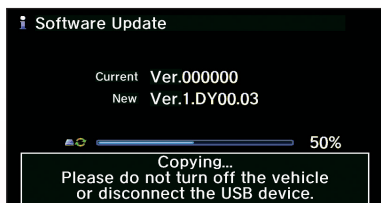
#7

- ❑ The navigation system will automatically reboot and start the map update process.



#8

- ❑ Various screens will then be presented as the software update cycles through the process.



**For detailed map coverage information please contact the Honda Navigation Center:
Canada: 1-866-353-9655 or www.hondanavi.ca**

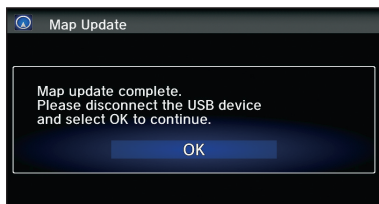
#9

- ❑ The following Notification screen appears. The map update takes 15-20 minutes to complete.



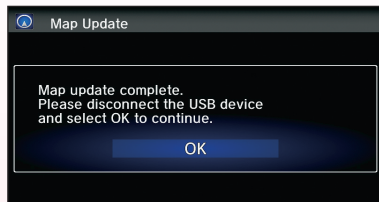
#10

- ❑ The map update is complete when the following Notification screen appears. Remove the USB device first, and then reinstall the USB adaptor in its holder.



#11

- ❑ Select **OK** on the touch screen.



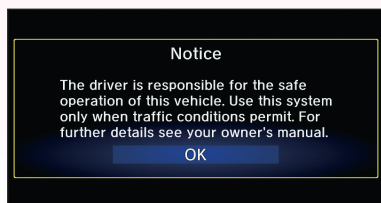
For detailed map coverage information please contact the Honda Navigation Center:
United States: 1-888-291-4675 or www.hondanavi.com

#12

- ☐ The following Notice screen appears. Select **OK** on the touch screen.

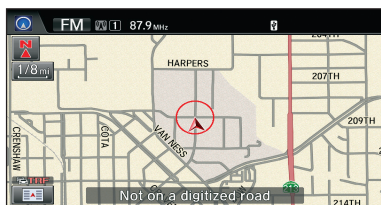
Note: *With this update, the Notice screen shown below replaces the prior Confirmation screen.*

This screen will only appear for about 5 seconds, then change to the map screen regardless if OK is selected.



#13

- ☐ The map screen then appears.



For detailed map coverage information please contact the Honda Navigation Center:
Canada: 1-866-353-9655 or www.hondanavi.ca

For customer service, please contact:

Honda Navigation Center

United States: www.hondanavi.com / 1-888-291-4675

Canada: www.hondanavi.ca / 1-866-353-9655



HONDA



© 2017 Honda Motor Co., Ltd. All rights reserved.

© 1987-2017 HERE. All rights reserved.

P4898-0270-711NAM